

Megin M



LED



net lumen output up to
12800
lm

system efficacy up to
113
lm/W

colour rendering index
70+
Ra

13 light
distribution
options

43 %
ENERGYSAVING

Name of the luminaire	TRITON 150W	MEGIN M
Light source	ME	LED
Luminous flux of installed light sources (lm)	15000	10850
LOR (%)	72	100
Net lumen output (at Ta = 25 °C)	10800	10850
Power consumption (W)	169	97
System efficacy of luminaire (lm/W)	64	112

Europe's fastest growing LED lighting provider

oms

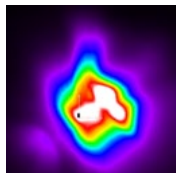
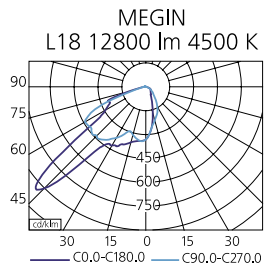


Megin M – Crosswalk

Especially developed for crosswalks (lenses type L18)

In modern street lighting a crosswalk is a road section where all road users must slow down and give the pas to walkers on a crossing.

In order for drivers to react promptly, such areas must be clearly visible by means of being illuminated to a higher level than other sections of the road.



Street lighting

OMS

Megin M



LED



Features

- Low power consumption and high system efficacy up to 113 lm/W
- 13 different light distribution curves (lenses types L01 standard, L02–L12 and L18 on request)
- Dimming possibilities: intelligent dimming / step dimming (bi-level output) / DALI / 1-10V
- Tilttable spigot (135° in 5° steps)
- Correlated color temperature of 4500 K
- Up to 150 W sodium lamp replacement

Areas of application

- Streets, sidewalks, parks, industrial areas

Street lighting

OMS

Megin M



Mounting	Pole-top/side entry installation (PMT)
Light source	LED
Optical system	Lenses (LNS)
Wiring	Electronic control gear FIX/DALI/1-10V/STEP DIM/ INT DIM (ECG/EDA/E10/EDB/EDP)
Materials	Housing: die-cast aluminium, Cover: polycarbonate Frame: sheet steel, Tilttable spigot: die cast aluminium
Surface finish	Housing: grey RAL 9006 (G06)
Accessories	External lead-in flexible cable
Service lifetime	100,000 hours/L80
Ambient temp.	From -35 °C to +40 °C



LED

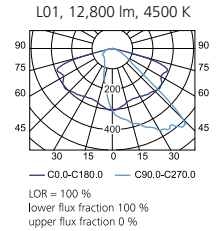
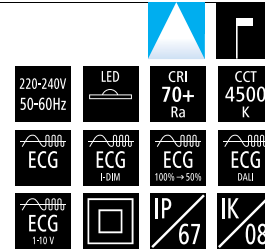
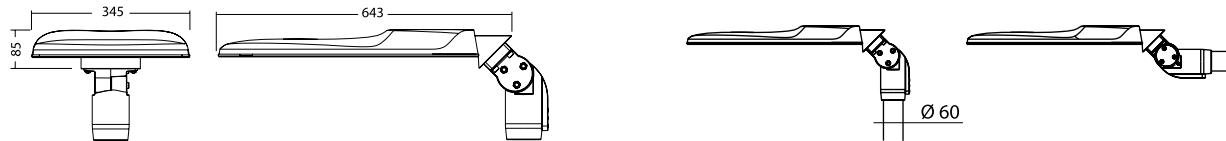


Megin M



TYPE	NET LUMEN OUTPUT (at Ta = 25 °C) (lm)	POWER CONSUMPTION (W)	SYSTEM EFFICACY (lm/W)	COLOUR RENDERING INDEX CRI (Ra)	CORRELATED COLOUR TEMPERATURE CCT (K)	WINDAGE AREA / TOP (m ²)	WEIGHT (kg)	RECOMMENDED MOUNTING HEIGHT (m)	REPLACEMENT OF STANDARD
MEGIN M	2950	26	113	70+	4500	0.026/0.194	8.7	5-8	HPS 70 W
MEGIN M	3950	35	113	70+	4500	0.026/0.194	8.7	5-8	HPS 70 W
MEGIN M	4950	44	113	70+	4500	0.026/0.194	9.7	7-10	HPS 70 W
MEGIN M	6900	62	111	70+	4500	0.026/0.194	9.7	7-10	HPS 100 W
MEGIN M	8900	80	111	70+	4500	0.026/0.194	9.7	7-10	HPS 100 W
MEGIN M	10850	97	112	70+	4500	0.026/0.194	9.7	8-12	HPS 150 W
MEGIN M	12800	115	111	70+	4500	0.026/0.194	9.7	8-12	HPS 150 W

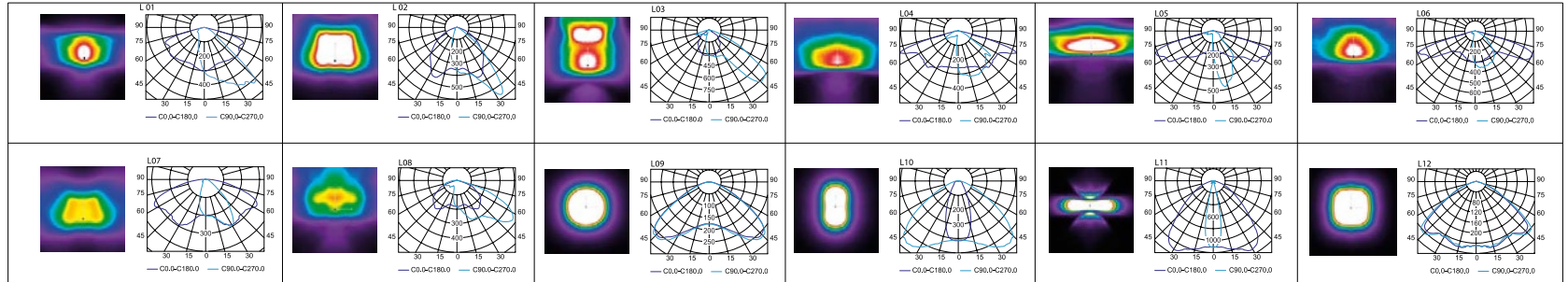
Luminous flux tolerance +/- 10%



Street lighting

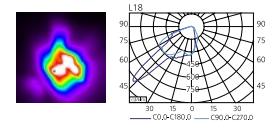
OMS

Megin M



The efficient and effective luminaire with 13 light distribution options.

Especially developed for crosswalks (lenses type L18)



Megin M



ENERGY SAVING



Name of the luminaire	TRITON 150W	MEGIN M
Light source	ME	LED
Luminous flux of installed light sources (lm)	15000	10850
LOR (%)	72	100
Net lumen output (at Ta = 25 °C)	10800	10850
Power consumption (W)	169	97
System efficacy of luminaire (lm/W)	64	112

43 %
ENERGY SAVING



Thank you

HEAD OFFICE OMS, spol. s r. o.
906 02 Dojč 419, Slovak Republic
info@omslighting.com
www.omslighting.com

EUROPE'S FASTEST GROWING LED LIGHTING PROVIDER



oms
THE RIGHT LIGHT FOR THE NEXT 20 YEARS