

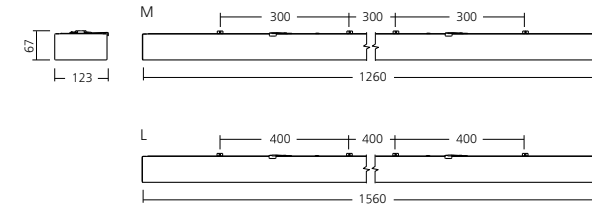
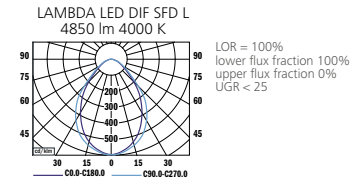
UPCOMING

LAMBDA LED DIF SURFACED

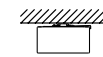
MICROPRISMA
LED



PHOTOMETRY



MOUNTING



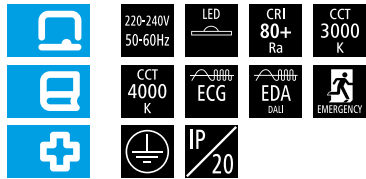
WITH EMERGENCY



TYPE	NET LUMEN OUTPUT (at Ta = 25 °C) (lm)	POWER CONSUMPTION (W)	SYSTEM EFFICACY (lm/W)	COLOR RENDERING INDEX CRI (Ra)	CORRELATED COLOR TEMPERATURE CCT (K)	BEAM ANGLE (C0-180, C90-270)	EMERGENCY UNIT (lm)	WEIGHT (kg)
LAMBDA LED DIF SFD M	3800	35	109	80+	3000	74°, 83°	100	5.6
LAMBDA LED DIF SFD M	3900	35	111	80+	4000	74°, 83°	100	5.6
LAMBDA LED DIF SFD M	4650	44	106	80+	3000	74°, 83°	100	5.6
LAMBDA LED DIF SFD M	4800	44	109	80+	4000	74°, 83°	100	5.6
LAMBDA LED DIF SFD L	4750	42	113	80+	3000	74°, 83°	100	6.2
LAMBDA LED DIF SFD L	4850	42	115	80+	4000	74°, 83°	100	6.2
LAMBDA LED DIF SFD L	5850	54	108	80+	3000	74°, 83°	100	6.2
LAMBDA LED DIF SFD L	6000	54	111	80+	4000	74°, 83°	100	6.2

Luminous flux tolerance +/- 10%

Lambda LED Dif Surfacd



EN

Mounting
Ceiling surfaced (SFD)
Light source
LED
Optical system
Microprismatic diffuser (MCD)
Wiring
Electronic control gear FIX/DALI (ECG/EDA)
Emergency unit variant (3H)
Materials
Housing: sheet steel
Diffuser: PMMA
Surface finish
Housing: white RAL 9003 (W03)
Service lifetime
50,000 hours/L80 /B10 (ta 25°C)
Ambient temperature
From -25 °C to +35 °C
(from 0°C with EM unit)

DE

Montage
Deckenleuchte (SFD)
Lichtquelle
LED
Optisches System
Mikroprismatischer Diffusor (MCD)
Vorschaltgerät
Elektronisches Vorschaltgerät FIX/DALI (ECG/EDA)
Notbeleuchtung Variante (3H)
Material
Körper: Stahlblech
Diffusor: PMMA
Oberflächenveredelung
Körper: weiss RAL 9003 (W03)
Lebensdauer
50,000 Stunden/L80 /B10 (ta 25°C)
Umgebungstemperatur
Von -25 °C bis +35 °C
(von 0°C mit Notbeleuchtung)

FR

Montage
Plafonnier apparent (SFD)
Source lumineuse
LED
Système optique
Microprismatique (MCD)
Équipement électrique
Ballast électronique FIX/DALI (ECG/EDA)
Variante de l'unité de secours (3H)
Matériels
Corps: tôle d'acier
Diffuseur: PMMA
Finition de surface
Corps: blanc RAL 9003 (W03)
Durée de vie utile
50,000 heures/L80 /B10 (ta 25°C)
Température ambiante
De -25 °C à +35 °C
(de 0°C avec l'unité de secours)

SK

Montáž
Prisadené (SFD)
Svetelný zdroj
LED
Optický systém
Mikroprizmatický difúzor (MCD)
Elektrická výbava
Elektronický predradník FIX/DALI (ECG/EDA)
Varianta s núdzovou jednotkou (3H)
Material
Teleso: oceľový plech
Difúzor: PMMA
Povrchová úprava
Teleso: biela RAL 9003 (W03)
Servisná životnosť
50,000 hodín/L80 /B10 (ta 25°C)
Teplota okolia
Od -25 °C do +35 °C
(od 0°C s núdzovou jednotkou)

ES

Montaje
Sobrepuestas en el techo (SFD)
Fuente luminosa
LED
Sistema óptico
Microprismático (MCD)
Cableado
Equipo de control electrónico FIX/DALI (ECG/EDA)
Variante unidad de emergencia (3H)
Material
Cuerpo: lámina de acero
Difusor: PMMA
Tratamiento de la superficie
Cuerpo: blanco RAL 9003 (W03)
Vida útil
50,000 horas/L80 /B10 (ta 25°C)
Temperatura ambiente
Desde -25 °C a +40 °C
(desde 0°C con unidad de emergencia)

IT

Installazione
A plafone (SFD)
Sorgente luminosa
LED
Sistema ottico
Microprismatico (MCD)
Cablaggio
Ballast elettronico FIX/DALI (ECG/EDA)
Variante unità di emergenza (3H)
Materiali
Corpo: lamina d'acciaio
Diffusore: PMMA
Finitura
Corpo: bianco RAL 9003 (W03)
Durata di vita
50,000 ore/L80 /B10 (ta 25°C)
Temperatura d'ambiente
Da -25 °C a +35 °C
(da 0°C con unità di emergenza)

RU

Установка
Потолочная накладная (SFD)
Источник света
LED
Оптическая система
Микропризматический рассеиватель (MCD)
Электрическое оснащение
Электронный аппарат FIX/DALI (ECG/EDA)
блок аварийного освещения (3H)
Материал
Корпус: листовая сталь
Рассеиватель: полиметилметакрилат
Отделка поверхности
Корпус: белый RAL 9003 (W03)
Срок службы
50,000 часов/L80 /B10 (ta 25°C)
Температура окружающей среды
От -25 °C до +35 °C
(от 0°C с аварийного освещения)