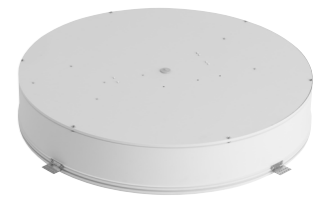
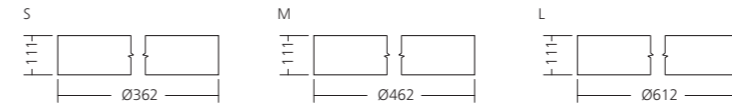
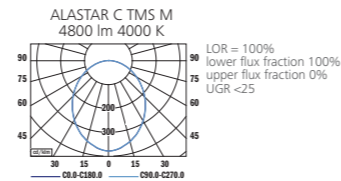


ALASTAR

OPAL
LED



PHOTOMETRY



MOUNTING



TYPE	NET LUMEN OUTPUT (at Ta = 25 °C) (lm)	POWER CONSUMPTION (W)	SYSTEM EFFICACY (lm/W)	COLOUR RENDERING INDEX CRI (Ra)	CORRELATED COLOUR TEMPERATURE CCT (K)	BEAM ANGLE (C0-180, C90-270)	WEIGHT (kg)	ORDER CODE	
								ECG	EDA
ALASTAR C TMS S	2250	18	125	80+	3000	105°	3.4	414031	414032
ALASTAR C TMS S	2400	18	133	80+	4000	105°	3.4	414029	414030
ALASTAR C TMS M	4500	36	125	80+	3000	105°	3.9	414019	414020
ALASTAR C TMS M	4800	36	133	80+	4000	105°	3.9	414017	414018
ALASTAR C TMS L	8500	73	116	80+	3000	105°	8.9	414007	414008
ALASTAR C TMS L	9000	73	123	80+	4000	105°	8.9	414005	414006

Luminous flux tolerance +/- 10%.

Alastar C Trimless



220-240V
50-60Hz

LED

CRI 80+
Ra

CCT 3000 K

CCT 4000 K

ECG

EDA DALI

IP 40

EN

Mounting
Ceiling recessed (TMS)
Optical system
Opal diffuser (OPD)
Wiring
Electronic control gear FIX/DALI (ECG/EDA)
Materials
Housing: extruded aluminium
Diffuser: PMMA
Holders: sheet steel
Surface finish
Housing: grey RAL 9006 (G06)
Service lifetime
60,000 hours/L80/B10 (ta 25°C)
Ambient temperature
From -20 °C to +35 °C

DE

Montage
Einbauleuchte (TMS)
Optisches System
Opal Diffusor (OPD)
Vorschaltgerät
Elektronisches Vorschaltgerät FIX/DALI (ECG/EDA)
Material
Körper: Extrudiertes Aluminium
Diffusor: PMMA
Halter: Stahlblech
Oberflächenveredelung
Körper: grau RAL 9006 (G06)
Lebensdauer
60,000 Stunden/L80/B10 (ta 25°C)
Umgebungstemperatur
Von -20 °C bis +35 °C

FR

Montage
Plafonnier encastrable (TMS)
Système optique
Diffuseur opale (OPD)
Équipement électrique
Ballast électronique FIX/DALI (ECG/EDA)
Matériels
Corps: aluminium extrudé
Diffusor: PMMA
Supports: tôle d'acier
Finition de surface
Corps: gris RAL 9006 (G06)
Durée de vie utile
60,000 heures/L80/B10 (ta 25°C)
Température ambiante
De -20 °C à +35 °C

SK

Montáž
Vsaďená (TMS)
Optický systém
Opálový difúzor (OPD)
Elektrická výbava
Elektronický predradník FIX/DALI (ECG/EDA)
Material
Teleso: extrudovaný hliník
Difúzor: PMMA
Držiak: oceľový plech
Povrchová úprava
Teleso: šedá RAL 9006 (G06)
Service life
60,000 hodín/L80/B10 (ta 25°C)
Teplota okolia
Od -20 °C do +35 °C

ES

Montaje
Empotradas en el techo (TMS)
Sistema óptico
Difusor ópalo (OPD)
Cableado
Equipo de control electrónico FIX/DALI (ECG/EDA)
Material
Cuerpo: aluminio extruido
Difusor: PMMA
Soportes: lámina de acero
Tratamiento de la superficie
Cuerpo: gris RAL 9006 (G06)
Vida útil
60,000 horas/L80/B10 (ta 25°C)
Temperatura ambiente
Desde -20 °C a +35 °C

IT

Installazione
Ad incasso a soffitto (TMS)
Sistema ottico
Diffusore opale (OPD)
Cablaggio
Ballast elettronico FIX/DALI (ECG/EDA)
Materiali
Corpo: estruso di alluminio
Diffusore: PMMA
Supporto: lamina d'acciaio
Finitura
Corpo: grigio RAL 9006 (G06)
Durata di vita
60,000 ore/L80/B10 (ta 25°C)
Temperatura d'ambiente
Da -20 °C a +35 °C

RU

Установка
Потолочная встроенная (TMS)
Оптическая система
Матовый рассеиватель (OPD)
Электрическое оснащение
Электронный аппарат FIX/DALI (ECG/EDA)
Материал
Корпус: экструдированный алюминий
Рассеиватель: полиметилметакрилат
Крепления: листовая сталь
Отделка поверхности
Корпус: серый RAL 9006 (G06)
Срок службы
60,000 часов/L80/B10 (ta 25°C)
Температура окружающей среды
От -20 °C до +35 °C



3 YEARS WARRANTY

MAINTENANCE FREE

ECO FRIENDLY

ENERGY SAVING

UV/IR

EEC A++/A+/A

THE MANUFACTURER CONTINUES TO DEVELOP PRODUCTS THROUGHOUT THEIR LIFETIME. THEREFORE, THE COMPANY RESERVES THE RIGHT TO MODIFY MATERIALS, COMPONENTS, AND TECHNICAL PARAMETERS WITHOUT NOTICE. LUMINOUS OUTPUT AND ELECTRICAL LOAD HAVE AN INITIAL TOLERANCE OF +/- 10 % FROM NOMINAL. FAILURE OF ONE LED LIGHT POINT WITHIN A LUMINAIRE DOES NOT IMPAIR FUNCTIONAL PERFORMANCE AND SO IS NOT CLASSIFIED AS REASON FOR COMPLAINT.

ARCHITECTURAL LED LUMINAIRES