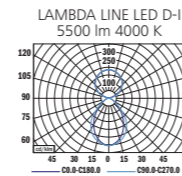


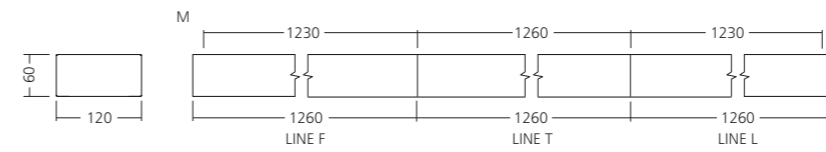
**LAMBDA**  
MICROPRISMA  
LED



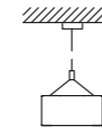
**PHOTOMETRY**



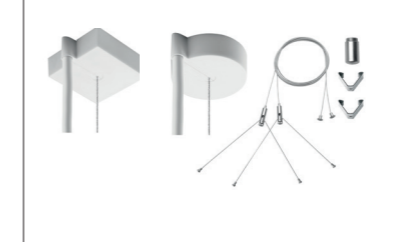
LOR = 100%  
lower flux fraction 51%  
upper flux fraction 49%  
UGR <19



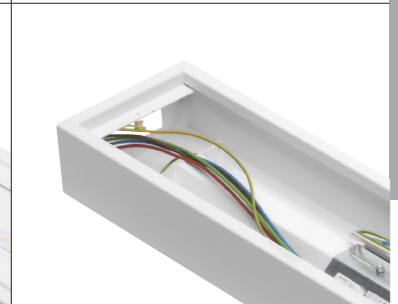
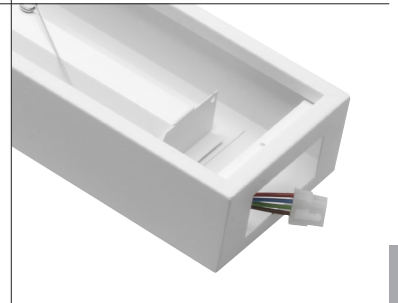
**MOUNTING**



RS-S 58 L150 SQ (SQUARE SHAPE) OR RD (ROUND SHAPE)



RS-C 17/58 L150



TYPE	NET LUMEN OUTPUT (at Ta = 25 °C) (lm)	POWER CONSUMPTION (W)	SYSTEM EFFICACY (lm/W)	COLOR RENDERING INDEX CRI (Ra)	CORRELATED COLOR TEMPERATURE CCT (K)	BEAM ANGLE (C0-180, C90-270)	EMERGENCY UNIT 3H	WEIGHT (kg)	ORDER CODE		
									ECG	EDA	EM
LAMBDA LINE LED D-I M F	5200	37	141	80+	3000	75°, 85°	100	5.1	304001	304003	304013
LAMBDA LINE LED D-I M F	5500	37	149	80+	4000	75°, 85°	110	5.1	304002	304004	304014
LAMBDA LINE LED D-I M T	5200	37	141	80+	3000	75°, 85°	100	4.9	304005	304007	304015
LAMBDA LINE LED D-I M T	5500	37	149	80+	4000	75°, 85°	110	4.9	304006	304008	304016
LAMBDA LINE LED D-I M L	5200	37	141	80+	3000	75°, 85°	-	4.8	304009	304011	-
LAMBDA LINE LED D-I M L	5500	37	149	80+	4000	75°, 85°	-	4.8	304010	304012	-

Luminous flux tolerance +/- 10%

Rope suspension RS-S 58 L150 SQ	903033
Rope suspension RS-S 58 L150 RD	903030
Rope suspension connection RS-C 17/58 L150	903028

# Lambda Line Led D-I



**EN**

**Mounting**  
Suspended- determined for continuous installation (MDS)

**Optical system**  
Microprismatic diffuser (MCD)

**Wiring**  
Electronic control gear FIX/DALI (ECG/EDA)  
Through wiring (F/T version)  
Emergency unit variant (3H, ECG, F/T)  
External lead-in flexible cable (F)

**Materials**  
Housing: sheet steel  
Diffuser: PMMA

**Surface finish**  
Housing: white RAL 9003 (W03)

**Accessories**  
Rope suspension RS-S 58, RS-C 17/58

**Service lifetime**  
100,000 hours/L90/B10 (ta 25°C)

**Ambient temperature**  
From -25 °C to +35 °C  
(from +5 °C with EM unit)

**DE**

**Montage**  
Hängend - mit Erweiterungsmöglichkeit (MDS)

**Optisches System**  
Mikroprismatischer Diffusor (MCD)

**Vorschaltgerät**  
Elektronisches Vorschaltgerät FIX/DALI (ECG/EDA)  
Durchgangsverdrahtung (F/T Version)  
Notbeleuchtung Variante (3H, ECG, F/T)  
Externes Anschlusskabel (F)

**Material**  
Körper: Stahlblech  
Diffusor: PMMA

**Oberflächenveredelung**  
Körper: weiss RAL 9003 (W03)

**Zubehör**  
Seilaufhängung RS-S 58, RS-C 17/58

**Lebensdauer**  
100,000 Stunden/L90/B10 (ta 25°C)

**Umgebungstemperatur**  
Von -25 °C bis +35 °C  
(von +5 °C mit Notbeleuchtung)

**FR**

**Montage**  
Suspendu - conçu pour une installation continue (MDS)

**Système optique**  
Microprismatique (MCD)

**Équipement électrique**  
Ballast électronique FIX/DALI (ECG/EDA)  
Câblage traversant (version F/T)  
Variante de l'unité de secours (3H, ECG, F/T)  
Privodný napájací kábel (F)

**Matériels**  
Corps: tôle d'acier  
Diffuseur: PMMA

**Finition de surface**  
Corps: blanc RAL 9003 (W03)

**Accessoires**  
Câble de suspension RS-S 58, RS-C 17/58

**Prislušenstvo**  
Lankový záves RS-S 58, RS-C 17/58

**Servisná životnosť**  
100,000 hodín/L90/B10 (ta 25°C)

**Teplota okolia**  
Od -25 °C do +35 °C  
(od +5 °C s núdzovou jednotkou)

**SK**

**Montáž**  
Závesné - predurčené na montáž do línií (MDS)

**Optický systém**  
Mikroprizmatický difúzor (MCD)

**Elektrická výbava**  
Elektronický predradník FIX/DALI (ECG/EDA)  
Prieběžné vinutie (F/T verzia)  
Varianta s núdzovou jednotkou (3H, ECG, F/T)  
Privodný napájací kábel (F)

**Material**  
Těleso: ocelový plech  
Difúzor: PMMA

**Povrchová úprava**  
Těleso: biela RAL 9003 (W03)

**Prislušenstvo**  
Lankový záves RS-S 58, RS-C 17/58

**Servisná životnosť**  
100,000 hodín/L90/B10 (ta 25°C)

**Teplota okolia**  
Od -25 °C do +35 °C  
(od +5 °C s núdzovou jednotkou)

**ES**

**Montaje**  
Suspendidas - específico para instalaciones continuas (MDS)

**Sistema óptico**  
Microprismático (MCD)

**Cableado**  
Equipo de control electrónico FIX/DALI (ECG/EDA)  
A través del cableado (versión F/T)  
Variante unidad de emergencia (3H, ECG, F/T)  
Cable alimentador externo (F)

**Material**  
Cuerpo: lámina de acero  
Difusor: PMMA

**Tratamiento de la superficie**  
Cuerpo: blanco RAL 9003 (W03)

**Accesorios**  
Cable de suspensión RS-S 58, RS-C 17/58

**Vida útil**  
100,000 horas/L90/B10 (ta 25°C)

**Temperatura ambiente**  
Desde -25 °C a +35 °C  
(desde +5 °C con unidad de emergencia)

**IT**

**Installazione**  
A sospensione - per installazioni in linea (MDS)

**Sistema ottico**  
Microprismatico (MCD)

**Cablaggio**  
Ballast elettronico FIX/DALI (ECG/EDA)  
Cavi passanti (versioni F/T)  
Variante unità di emergenza (3H, ECG, F/T)  
Cavetto di alimentazione esterno (F)

**Materiali**  
Corpo: lamina d'acciaio  
Diffusore: PMMA

**Finitura**  
Corpo: bianco RAL 9003 (W03)

**Accessori**  
Cavo di sospensione RS-S 58, RS-C 17/58

**Durata di vita**  
100,000 ore/L90/B10 (ta 25°C)

**Temperatura d'ambiente**  
Da -25 °C a +35 °C  
(da +5 °C con unità di emergenza)

**RU**

**Установка**  
Подвесная - рассчитанная на долговременную установку (MDS)

**Оптическая система**  
Микропризматический рассеиватель (MCD)

**Электрическое оснащение**  
Электронный аппарат FIX/DALI (ECG/EDA)  
Сквозная проводка (варианты F/T)  
Блок аварийного освещения (3H, ECG, F/T)  
Внешний свинца в гибком кабеле (F)

**Материал**  
Корпус: листовая сталь  
Рассеиватель: полиметилметакрилат

**Отделка поверхности**  
Корпус: белый RAL 9003 (W03)

**Аксессуары**  
Тросовый подвес RS-S 58, RS-C 17/58

**Срок службы**  
100,000 часов/L90/B10 (ta 25°C)

**Температура окружающей среды**  
От -25 °C до +35 °C  
(от +5 °C с аварийного освещения)