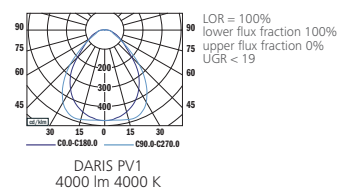


NEW

DARIS MICROPRISMA LED



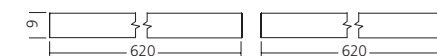
PHOTOMETRY



PV1



PR1

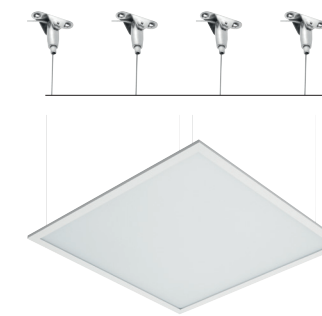
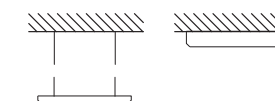


MOUNTING

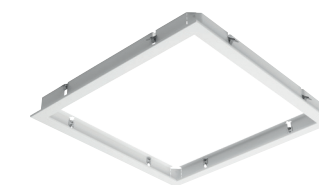
PV CEILING (600 x 600)



PR CEILING (625 x 625)



FRAME FOR PLASTERBOARD INSTALLATION



FRAME FOR SURFACED INSTALLATION (FOR PV1)



TYPE	NET LUMEN OUTPUT (at Ta = 25°C) (lm)	POWER CONSUMPTION (W)	SYSTEM EFFICACY (lm/W)	COLOUR RENDERING INDEX CRI (Ra)	CORRELATED COLOUR TEMPERATURE CCT (K)	BEAM ANGLE (C0-180, C90-270)	WEIGHT (kg)	ORDER CODE	
								PV1	PR1
DARIS	4000	34	118	80+	4000	85°, 90°	3.8	429001	429002

Luminous flux tolerance +/- 10%

Rope suspension L150

903044

Frame for plasterboard installation PV1

904001

Frame for plasterboard installation PR1

904008

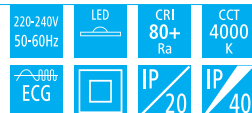
Frame for surfaced installation PV1

905001

Frame for surfaced installation PR1

905002

Daris



EN

MountingCeiling recessed
PVx/PRx - T-ceiling**Optical system**

Microprismatic diffuser (MCD)

Wiring

Electronic control gear FIX (ECG)

MaterialsHousing: aluminium
Diffuser: PS**Surface finish**

Housing: white RAL 9016

Accessories

Rope suspension

Frame for plasterboard installation

Frame for surfaced installation

Service lifetime

50,000 hours/L70/B50 (ta 25°C)

Ambient temperature

From -10 °C to +40 °C

DE

MontageEinbauleuchte
PVx/PRx - Sichtbare T-schiene Decke**Optisches System**

Mikroprismatischer Diffusor (MCD)

Vorschaltgerät

Elektronisches Vorschaltgerät FIX (ECG)

MaterialKörper: aluminium
Diffusor: PS**Oberflächenveredelung**

Körper: weiss RAL 9016

Zubehör

Seilabhängung

Rahmen für Gipskarton - Installation

Rahmen für deckenleuchte Installation

Lebensdauer

50,000 hours/L70/B50 (ta 25°C)

Umgebungstemperatur

Von -10 °C bis +40 °C

FR

MontagePlafonnier encastrable
PVx/PRx - Un faux plafond**Système optique**

Diffuseur microprisme (MCD)

Équipement électrique

Ballast électronique FIX (ECG)

MatérielsCorps: aluminium
Diffusor: PS**Finition de surface**

Corps: blanc RAL 9016

Accessoires

Câble de suspension

Cadre pour l'installation de plaques de plâtre

Cadre pour plafonnier apparent

Durée de vie utile

50,000 hours/L70/B50 (ta 25°C)

Température ambiante

De -10 °C do +40 °C

SK

MontážVsaďení
PVx/PRx - Kazetový strop**Optický systém**

Mikroprizmatický difúzor (MCD)

Elektrická výbava

Elektronický predradník FIX (ECG)

MaterialTeleso: hliník
Difúzor: PS**Povrchová úprava**

Teleso: biela RAL 9016

Príslušenstvo

Lankový záves

Rám pre montáž do sadrokartónového stropu

Rám pre prisadenie

Servisná životnosť

50,000 hours/L70/B50 (ta 25°C)

Teplota okolia

Od -10 °C do +40 °C

ES

MontajeEmpotradas en el techo
PVx/PRx - Techo T**Sistema óptico**

Difusor microprismático (MCD)

Cableado

Equipo de control electrónico FIX (ECG)

MaterialCuerpo: aluminio
Difusor: PS**Tratamiento de la superficie**

Cuerpo: blanco RAL 9016

Accesorios

Cable de suspensión

Capítulo para la instalación de placas de yeso

Capítulo para la instalación superficie

Vida útil

50,000 hours/L70/B50 (ta 25°C)

Temperatura ambiente

Desde -10 °C a +40 °C

IT

InstallazioneAd incasso a soffitto
PVx/PRx - Struttura in vista**Sistema ottico**

Diffusore microprismatico (MCD)

Cablaggio

Ballast elettronico FIX (ECG)

MaterialiCorpo: alluminio
Diffusore: PS**Finitura**

Corpo: bianco RAL 9016

Accessori

Cavo di sospensione

Telaio per l'installazione in cartongesso

Cornice per l'installazione affiorata

Durata di vita

50,000 hours/L70/B50 (ta 25°C)

Temperatura d'ambiente

Da -10 °C a +40 °C

RU

УстановкаПотолочная встроенная
PVx/PRx - Кассетный потолок**Оптическая система**

Микропризматический рассеиватель (MCD)

Электрическое оснащение

Электронный пускорегулирующий аппарат FIX (ECG)

МатериалКорпус: алюминий
Рассеиватель: PS**Отделка поверхности**

Корпус: белый RAL 9016

Аксессуары

Тросовый подвес

Рамка для установки гипсокартона

Рамка для вставки установки

Срок службы

50,000 hours/L70/B50 (ta 25°C)

Температура окружающей среды

От -10 °C до +40 °C