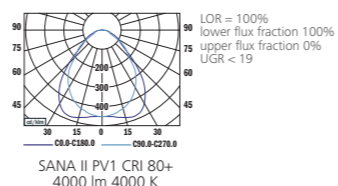


NEW

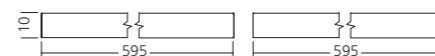
SANA MICROPRISMA LED



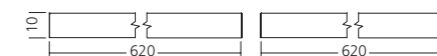
PHOTOMETRY



PV1



PR1

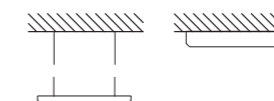


MOUNTING

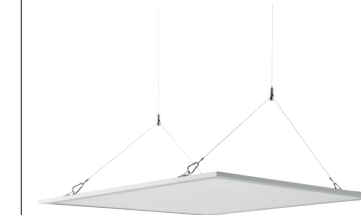
PV CEILING (600 x 600)



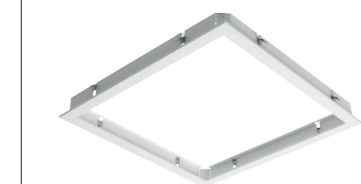
PR CEILING (625 x 625)



ROPE SUSPENSION



FRAME FOR PLASTERBOARD INSTALLATION



FRAME FOR SURFACED INSTALLATION (FOR PV1)



TYPE	NET LUMEN OUTPUT (at Ta = 25°C) (lm)	POWER CONSUMPTION (W)	SYSTEM EFFICACY (lm/W)	COLOUR RENDERING INDEX CRI (Ra)	CORRELATED COLOUR TEMPERATURE CCT (K)	BEAM ANGLE (C0-180, C90-270)	WEIGHT (kg)	ORDER CODE			
								PV1		PR1	
								ECG	EDA	ECG	EDA
SANA II PV1 / PR1	3600 / 3300	30	120 / 110	80+	3000	85°, 90°	5.7	426001	426017	426005	426021
SANA II PV1 / PR1	3900 / 3700	30	130 / 123	80+	4000	85°, 90°	5.7	426002	426018	426006	426022
SANA II PV1 / PR1	3900 / 3600	35	111 / 103	80+	3000	85°, 90°	5.7	426003	426019	426007	426023
SANA II PV1 / PR1	4350 / 4100	35	124 / 117	80+	4000	85°, 90°	5.7	426004	426020	426008	426024
SANA II PV1 / PR1	3050 / 2850	30	102 / 95	90+	3000	85°, 90°	5.7	426009	426025	426013	426029
SANA II PV1 / PR1	3250 / 3100	30	108 / 103	90+	4000	85°, 90°	5.7	426010	426026	426014	426030
SANA II PV1 / PR1	3400 / 3150	35	97 / 90	90+	3000	85°, 90°	5.7	426011	426027	426015	426031
SANA II PV1 / PR1	3700 / 3500	35	106 / 100	90+	4000	85°, 90°	5.7	426012	426028	426016	426032

Luminous flux tolerance +/- 10%

Rope suspension L150	903037
Frame for plasterboard installation PV1	904001
Frame for plasterboard installation PR1	904008
Frame for surfaced installation PV1	905001
Frame for surfaced installation PR1	905002

Sana II



270-240V 50-60Hz	LED	CRI 80+ Ra	CRI 90+ Ra
CCT 3000 K	CCT 4000 K	ECG	EDA DALI
IP 20	IP 40		

EN

Mounting

Ceiling recessed
PVx/PRx - T-ceiling

Optical system

Microprismatic diffuser (MCD)

Wiring

Electronic control gear FIX/DALI (ECG/EDA)

Materials

Housing: aluminium
Diffuser: PS

Surface finish

Housing: white RAL 9016

Accessories

Rope suspension
Frame for plasterboard installation
Frame for surfaced installation

Service lifetime

50,000 hours/L70/B50 (ta 25°C)

Ambient temperature

From -20 °C to +35 °C

DE

Montage

Einbauleuchte
PVx/PRx - Sichtbare T-schiene Decke

Optisches System

Mikroprismatischer Diffusor (MCD)

Vorschaltgerät

Elektronisches Vorschaltgerät FIX/DALI (ECG/EDA)

Material

Körper: aluminium
Diffusor: PS

Oberflächenveredelung

Körper: weiss RAL 9016

Zubehör

Seilabhängung
Rahmen für Gipskarton - Installation
Rahmen für deckenleuchte Installation

Lebensdauer

50,000 hours/L70/B50 (ta 25°C)

Umgebungstemperatur

Von -20 °C bis +35 °C

FR

Montage

Plafonnier encastrable
PVx/PRx - Un faux plafond

Système optique

Diffuseur microprisme (MCD)

Équipement électrique

Ballast électronique FIX/DALI (ECG/EDA)

Matériels

Corps: aluminium
Diffusor: PS

Finition de surface

Corps: blanc RAL 9016

Accessoires

Câble de suspension
Cadre pour l'installation de plaques de plâtre
Cadre pour plafonnier apparent

Durée de vie utile

50,000 hours/L70/B50 (ta 25°C)

Température ambiante

De -20 °C à +35 °C

SK

Montáž

Vsadené
PVx/PRx - Kazetový strop

Optický systém

Mikroprizmatický difúzor (MCD)

Elektrická výbava

Elektronický predradník FIX/DALI (ECG/EDA)

Material

Teleso: hliník
Difúzor: PS

Povrchová úprava

Teleso: biela RAL 9016

Príslušenstvo

Lankový záves
Rám pre montáž do sadrokartónového stropu
Rám pre prisadenie

Servisná životnosť

50,000 hours/L70/B50 (ta 25°C)

Teplota okolia

Od -20 °C do +35 °C

ES

Montaje

Empotradas en el techo
PVx/PRx - Techo T

Sistema óptico

Difusor microprismático (MCD)

Cableado

Equipo de control electrónico FIX/DALI (ECG/EDA)

Material

Cuerpo: aluminio
Difusor: PS

Tratamiento de la superficie

Cuerpo: blanco RAL 9016

Accesorios

Cable de suspensión
Capítulo para la instalación de placas de yeso
Capítulo para la instalación superficie

Vida útil

50,000 hours/L70/B50 (ta 25°C)

Temperatura ambiente

Desde -20 °C a +35 °C

IT

Installazione

Ad incasso a soffitto
PVx/PRx - Struttura in vista

Sistema ottico

Diffusore microprismatico (MCD)

Cablaggio

Ballast elettronico FIX/DALI (ECG/EDA)

Materiali

Corpo: alluminio
Diffusore: PS

Finitura

Corpo: bianco RAL 9016

Accessori

Cavo di sospensione
Telaio per l'installazione in cartongesso
Cornice per l'installazione affiorata

Durata di vita

50,000 hours/L70/B50 (ta 25°C)

Temperatura d'ambiente

Da -20 °C a +35 °C

RU

Установка

Потолочная встроенная
PVx/PRx - Кассетный потолок

Оптическая система

Микропризматический рассеиватель (MCD)

Электрическое оснащение

Электронный пускорегулирующий аппарат FIX/DALI (ECG/EDA)

Материал

Корпус: алюминий
Рассеиватель: PS

Отделка поверхности

Корпус: белый RAL 9016

Аксессуары

Тросовый подвес
Рамка для установки гипскартона
Рамка для вставки установки

Срок службы

50,000 hours/L70/B50 (ta 25°C)

Температура окружающей среды

От -20 °C до +35 °C