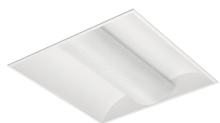
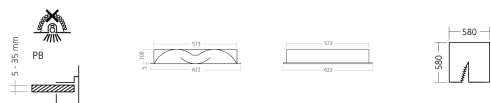




## PRODUCT DETAILS



## Dimensions



## Accessories



# INDIRECT C

**INDIRECT C DECOR L2 PB-1 FSD/FSDH**  
**2G11 2x55W, ECG, RAL 9003**

## DOWNLOADS

[Datasheet](#)  
[Product sheet](#)  
[Installation manual](#)  
[IES file](#)  
[LDT file](#)  
[EEC](#)

## Description

<b>MOUNTING</b>	Ceiling recessed PBx - Plasterboard ceiling
<b>LIGHT SOURCE</b>	Compact fluorescent lamp TC-L (FSDH)
<b>OPTICAL SYSTEM</b>	Shade (C)
<b>LIGHT DISTRIBUTION</b>	Direct
<b>WIRING</b>	Electronic control gear FIX (ECG) On request: Electronic control gear DALI (EDA) Emergency unit variant (1H / 3H)
<b>MATERIALS</b>	Housing: sheet steel Shade: sheet steel perforated
<b>SURFACE FINISH</b>	Housing: white RAL 9003 (W03)
<b>VOLTAGE</b>	220-240 V, 50-60 Hz
<b>NUMBER OF LAMPS</b>	2
<b>POWER</b>	2 x 55 W
<b>LAMPHOLDER</b>	2G11
<b>EEC</b>	A+ / A
<b>PROTECTION CLASS</b>	I
<b>IP PROTECTION DEGREE</b>	IP20
<b>DIMENSIONS (L x W x H)</b>	622 x 622 x 100 mm
<b>OPENING (L x W)</b>	580 x 580 mm
<b>WEIGHT</b>	6,4 kg

## AREAS OF APPLICATION

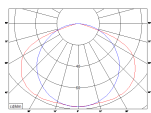
- EDUCATION
- HOSPITALITY
- HEALTH AND CARE
- OFFICE





---

## LIDC



---

The manufacturer reserves all rights to make changes in materials and components used in production of lighting fittings.