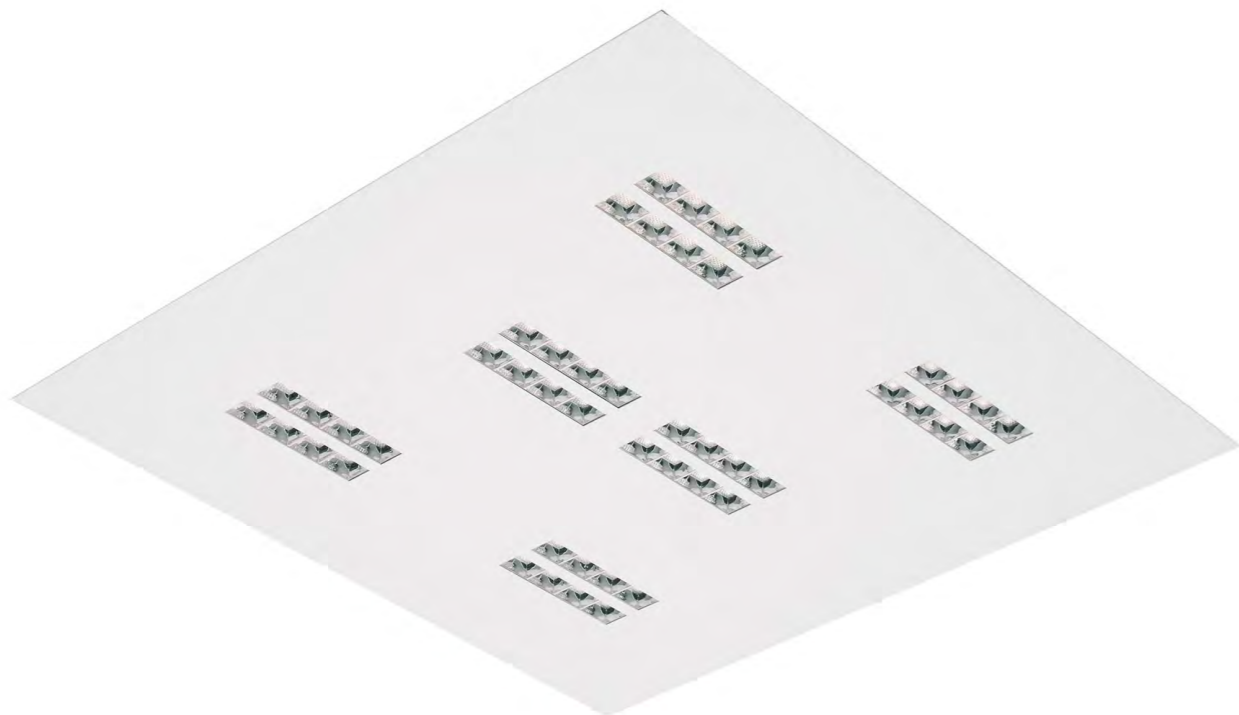


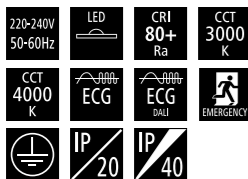
NEW

DECLAN
MICROPRISMA
LED

FASTRUNNER



Declan



EN

MountingCeiling recessed
PVx/PRx - T-ceiling
PBx - Plasterboard ceiling**Light source**

LED

Optical system

Diffuser + reflector (MCL)

Wiring

Electronic control gear FIX/DALI (ECG/EDA)

Emergency unit variant (3H)

Materials

Housing: sheet steel

Diffuser: microprismatic PMMA

Reflector: polished metallised polycarbonate

Surface finish

Housing: white RAL 9003 (W03)

Service lifetime

50,000 hours/L80

Ambient temperature

From -20°C to +35 °C

(from 0°C with EM unit)

DE

MontageEinbauleuchte
PVx/PRx - Sichtbare T-schiene Decke
PBx - Rigips Decke**Lichtquelle**

LED

Optisches System

Diffusor + Reflektor (MCL)

Vorschaltgerät

Elektronisches Vorschaltgerät FIX/DALI (ECG/EDA)

Notbeleuchtung Variante (3H)

Material

Körper: Stahlblech

Diffusor: mikroprismatisches PMMA

Reflektor: metallisiertes Polycarbonat

Oberflächenveredelung

Körper: Weiss RAL 9003 (W03)

Lebensdauer

50,000 Stunden/L80

Umgebungstemperatur

Von -20°C bis +35 °C

(von 0°C mit Notbeleuchtung)

FR

MontagePlafonnier encastrable
PVx/PRx - Un faux plafond
PBx - Un plafond en plâtre**Source lumineuse**

LED

Système optique

Diffusor + réflecteur (MCL)

Équipement électrique

Ballast électronique FIX/DALI (ECG/EDA)

Variante de l'unité de secours (3H)

Matériels

Corps: tôle d'acier

Diffusor: PMMA microprismatique

Réflecteur: polycarbonate métallisé

Finition de surface

Corps: blanc RAL 9003 (W03)

Durée de vie utile

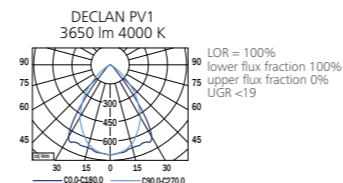
50,000 heures/L80

Température ambiante

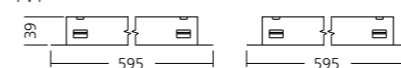
De -20°C à +35 °C

(de 0°C avec l'unité de secours)

PHOTOMETRY



PV1



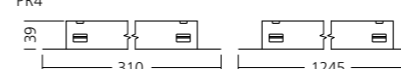
PR1



PV4



PR4



PB1



PB4



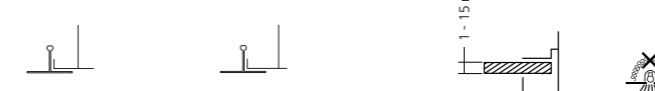
MOUNTING

PV (CEILING 600 x 600)

PR (CEILING 625 x 625)

PB

1 - 15 mm



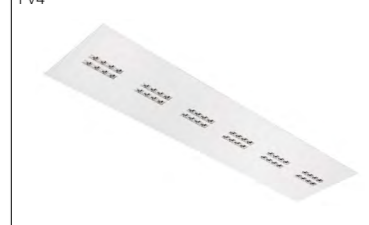
TYPE

TYPE	NET LUMEN OUTPUT (at Ta = 25 °C) (lm)	POWER CONSUMPTION (W)	SYSTEM EFFICACY (lm/W)	COLOR RENDERING INDEX CRI (Ra)	CORRELATED COLOR TEMPERATURE CCT (K)	BEAM ANGLE (C0-180, C90-270)	EMERGENCY UNIT 3H	WEIGHT (kg)
DECLAN PV/PR/PB1	3450	35	99	80+	3000	74°	310	5.9
DECLAN PV/PR/PB1	3650	35	104	80+	4000	74°	330	5.9
DECLAN PV/PR/PB4	3450	35	99	80+	3000	74°	310	5.7
DECLAN PV/PR/PB4	3650	35	104	80+	4000	74°	330	5.7

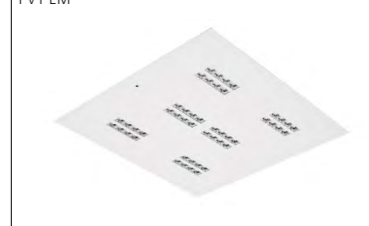
Luminous flux tolerance +/- 10%



PV4



PV1 EM



PB4



SK

MontážVsađené
PVx/PRx - Kasetový strop
PBx - Sadrokartonový strop**Svetelný zdroj**

LED

Optický systém

Difúzor + reflektor (MCL)

Elektrická výbava

Elektronický predradník FIX/DALI (ECG/EDA)

Varianta s núdzovou jednotkou (3H)

Material

Teleso: oceľový plech

Difúzor: mikroprizmatický PMMA

Reflektor: pokovený polykarbonát

Povrchová úprava

Teleso: biela RAL 9003 (W03)

Servisná životnosť

50,000 hodín/L80

Teplota okolia

Od -20°C do +35 °C

(od 0°C s núdzovou jednotkou)

ES

MontajeEmpotradas en el techo
PVx/PRx - Techo T
PBx - Techo de escayola**Fuente luminica**

LED

Sistema óptico

Difusor + reflector (MCL)

Cableado

Equipo de control electrónico FIX/DALI (ECG/EDA)

Variante unidad de emergencia (3H)

Material

Cuerpo: lámina de acero

Difusor: PMMA microprismático

Reflector: polycarbonato metalizado

Tratamiento de la superficie

Cuerpo: blanco RAL 9003 (W03)

Vida útil

50,000 horas/L80

Temperatura ambiente

Desde -20°C a +35 °C

(desde 0°C con unidad de emergencia)

IT

InstallazioneAd incasso a soffitto
PVx/PRx - Struttura in vista
PBx - Struttura cartongesso**Sorgente luminosa**

LED

Sistema ottico

Diffusore + riflettore (MCL)

Cablaggio

Ballast elettronico FIX/DALI (ECG/EDA)

Variante unità di emergenza (3H)

Materiali

Corpo: lamina d'acciaio

Diffusore: PMMA microprisma

Riflettore: polycarbonato metallizzato

Finitura

Corpo: bianco RAL 9003 (W03)

Durata di vita

50,000 ore/L80

Temperatura d'ambiente

Da -20°C a +35 °C

(da 0°C con unità di emergenza)

RU

УстановкаПотолочная встроенная
PVx/PRx - Касетный потолок
PBx - Гипсокартонный потолок**Источник света**

LED

Оптическая система

Рассеиватель + отражатель (MCL)

Электрическое оснащение

Электронный аппарат FIX/DALI (ECG/EDA)

Блок аварийного освещения (3H)

Материал

Корпус: листовая сталь

Рассеиватель: микроприз. полиметилметакрилат

Отражатель: металлизированная поликарбонат

Отделка поверхности

Корпус: белый RAL 9003 (W03)

Срок службы

50,000 часов/L80

Температура окружающей среды

От -20°C до +35 °C

(от 0°C с аварийного освещения)



THE MANUFACTURER RESERVES ALL RIGHTS TO MAKE CHANGES IN MATERIALS AND COMPONENTS USED IN PRODUCTION OF LIGHTING FITTINGS.